

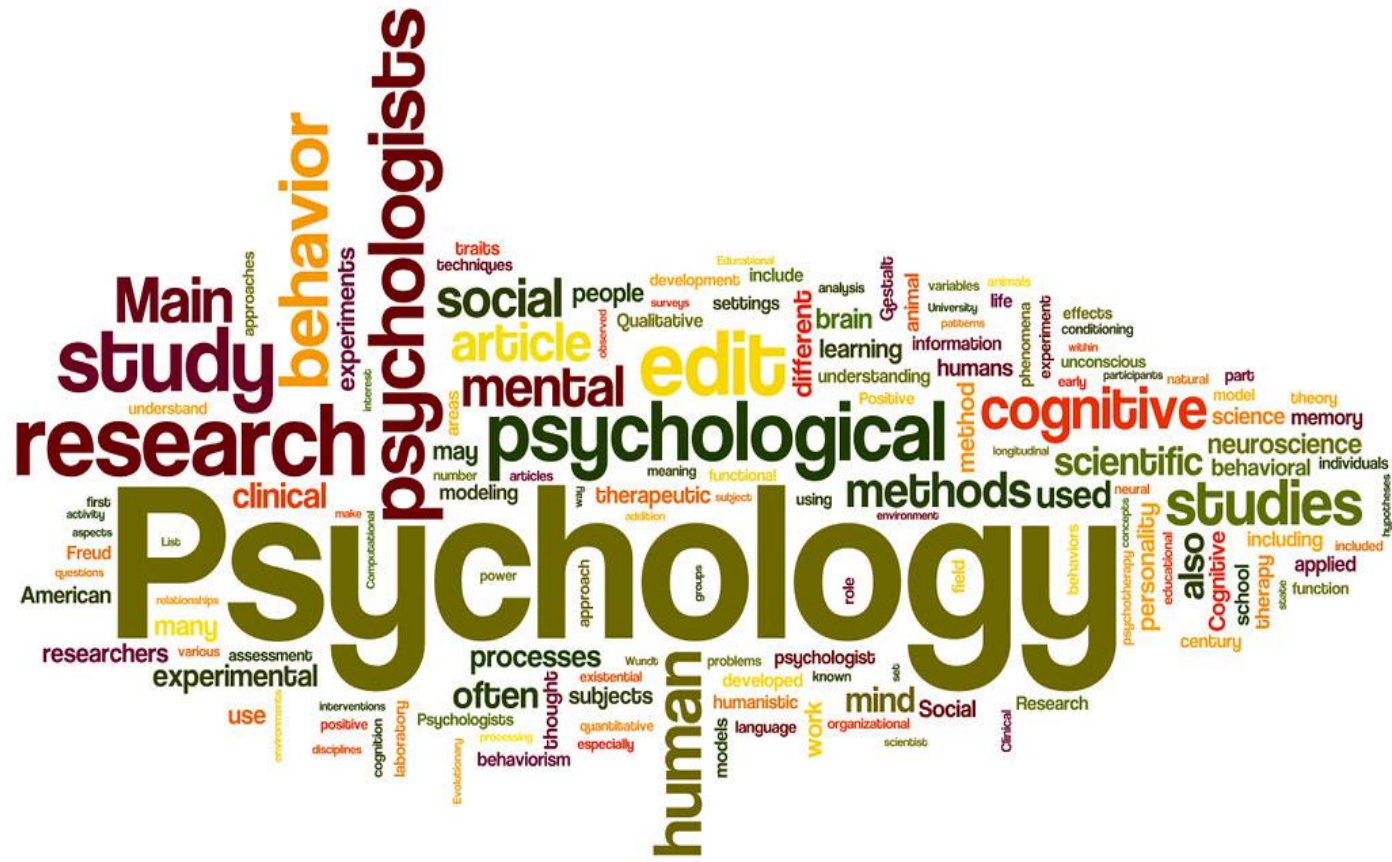
The Psychology Department

St Francis of Assisi



What is Psychology?

- ▶ The scientific study of the mind, brain and behaviour.



A Level course content



Topics

Paper 1

Introductory Topics in Psychology

Social Influence, Memory, Psychopathology, Attachment

Paper 2

Psychology in Context

Biopsychology, Approaches, Research Methods

Paper 3

Issues & Options in Psychology

Issues & Debates, Relationships, Schizophrenia, Aggression



Paper 1

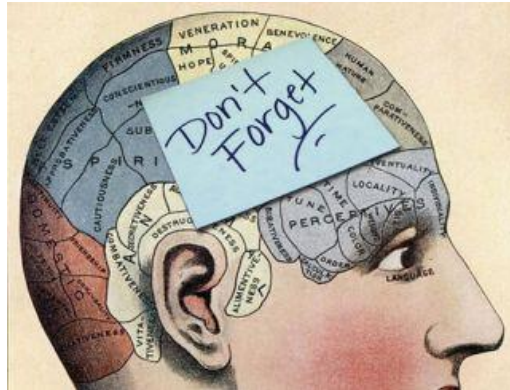
Introductory Topics in Psychology

All studied in year 12



Social Influence

Conformity
Obedience
Social change
Minority influence



Memory

Cognitive models
Eyewitness testimony
Cognitive interviews



Psychopathology

Explanations and treatments of;
Phobias
OCD
Depression



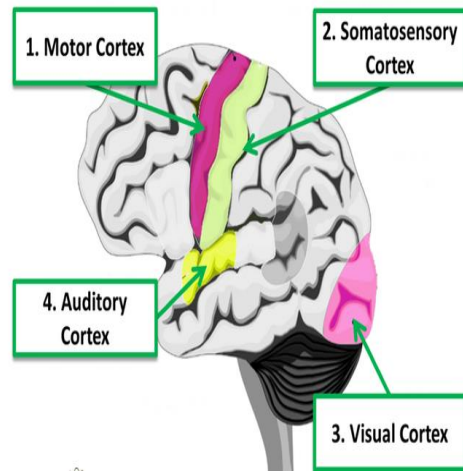
Attachment

Types and influences of attachment
Animal studies

Paper 2

Psychology in Context

Split between year 12 and year 13



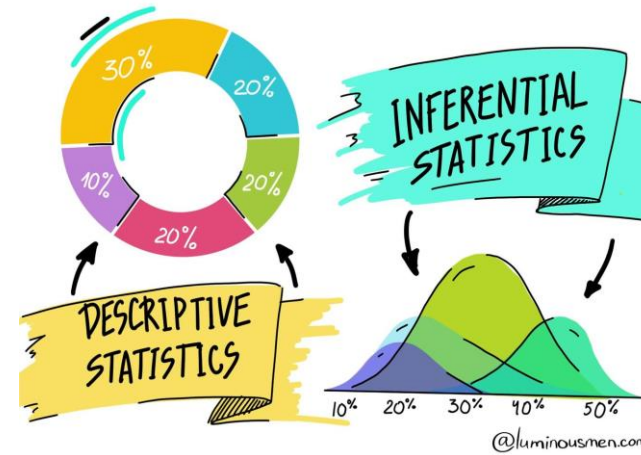
Biopsychology

*Neurons, Nervous System
Brain localization
Studying the brain
Biological rhythms*



Approaches

*Behaviourist and learning
Cognitive
Biological
Psychodynamic
Humanistic*



Research Methods

*Experimental methods and designs
Statistical analysis
Research reports
Ethical issues
Graphs and measures*



Paper 3

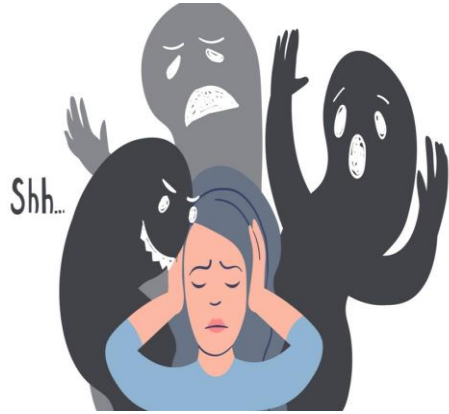
Issues & Options in Psychology

Studied in year 13



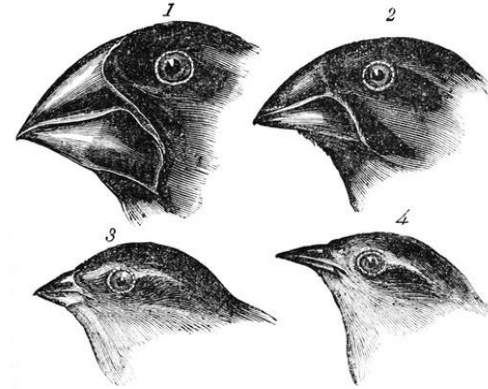
Issues & Debates

Nature vs nurture
Determinism vs free will
Methodology and ethics



Schizophrenia

Psychodynamic and biological explanations
Treatments and therapies



Relationships

Evolutionary Explanations of attraction
Theories of romantic relationships
Virtual and parasocial

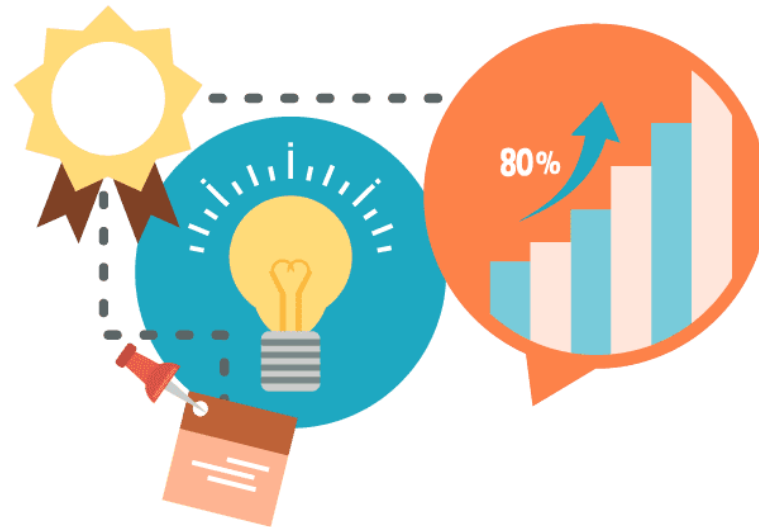


Aggression

Evolutionary explanations
Media influences
Neural and hormonal mechanisms

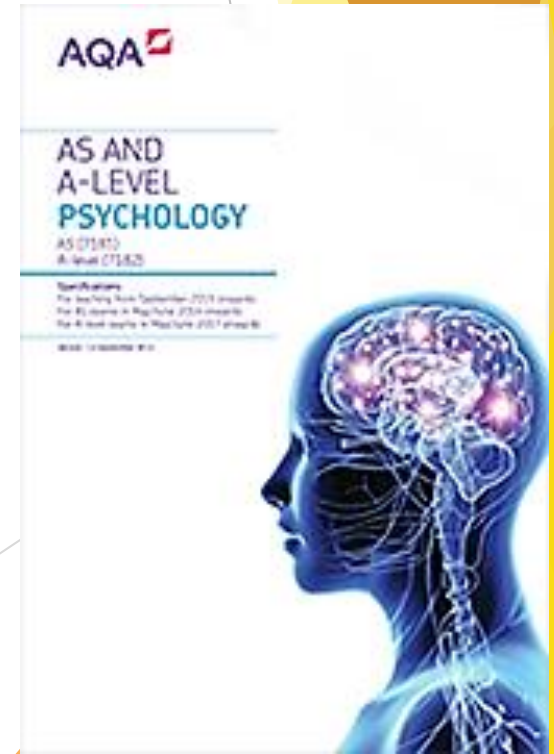
Skills

- ▶ Transferrable skills - evaluation, critical thinking, analysis
- ▶ Literacy skills - essay writing
- ▶ Numeracy - handling data
- ▶ Research - experimental and investigative activities
- ▶ Application of Psychological knowledge



A Level exams for 2025 entry

	Topics	Exams
Paper 1	<u>Introductory Topics in Psychology</u> Social Influence, Memory, Psychopathology, Attachment	June 2027
Paper 2	<u>Psychology in Context</u> Biopsychology, Approaches, Research Methods	June 2027
Paper 3	<u>Issues & Options in Psychology</u> Issues & Debates, Relationships, Schizophrenia, Aggression	June 2027



Exam results

2024	2023	2022	2021
A*-A 55%	A*-B 35%	A*-B 58.0%	A*-B 42.0%
A*-C 92%	A*-C 69%	A*-C 79.0%	A*-C 83.9%
A*-D 100%	A*-E 97%	A-D 100%	A*-E 100%



Prospects



- Teaching
- Research
- Advertising
- Marketing
- Business
- Recruitment
- Sales
- Police
- Social Work
- Midwifery
- Nursing

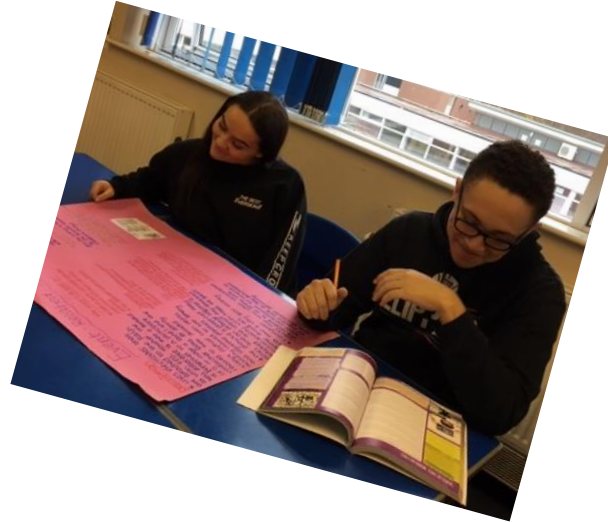


Psychology ambassador comments

Studying Psychology is an **enriching, fascinating experience** and I would thoroughly recommend choosing it as one of your A-level options, as it brings **life-long learning** and opportunities!

Psychology has opened my eyes to the ways and reasons why people behave. I especially love that psychology is **applicable to all of life.**

A-level Psychology has been both an extremely **fascinating and challenging** experience it has provided me with **crucial analytical and descriptive skills** that I will be able to take forward with me to any future experiences both at university and future career paths.



Questions...

Email: kpower@stfrancis.cc

